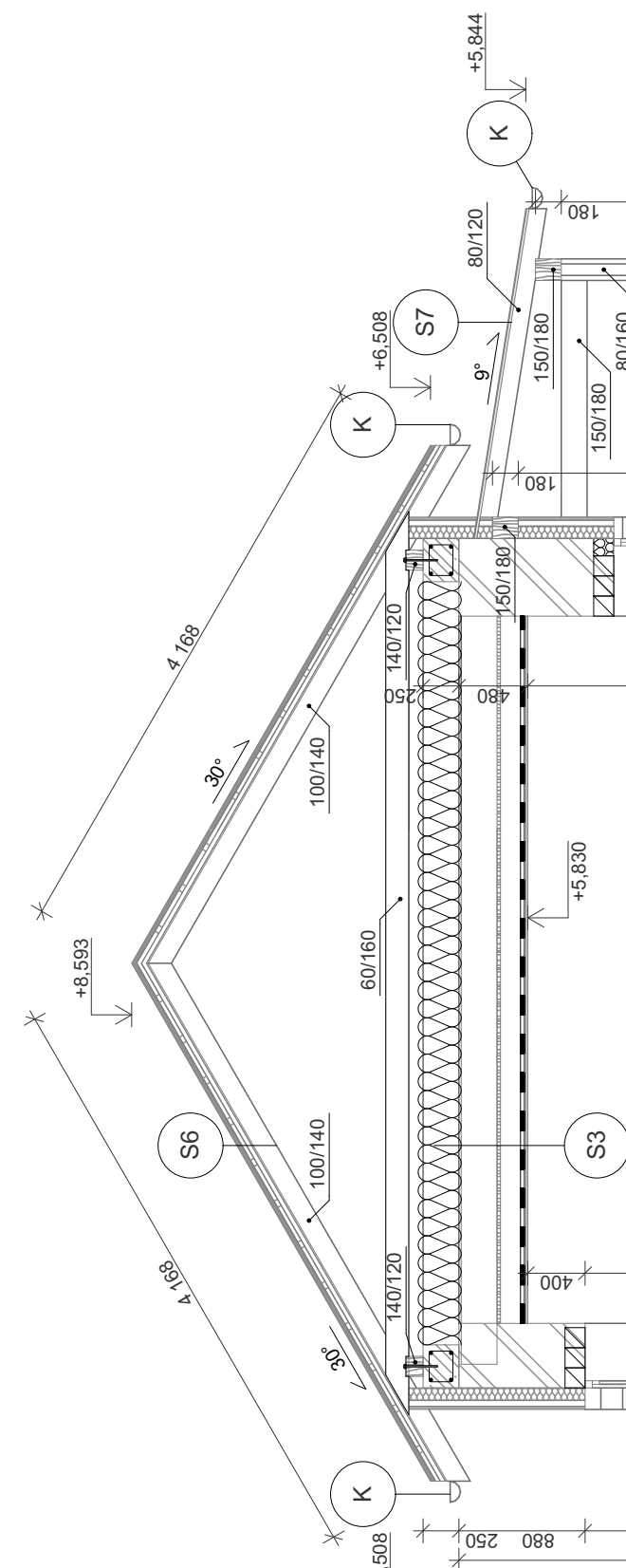
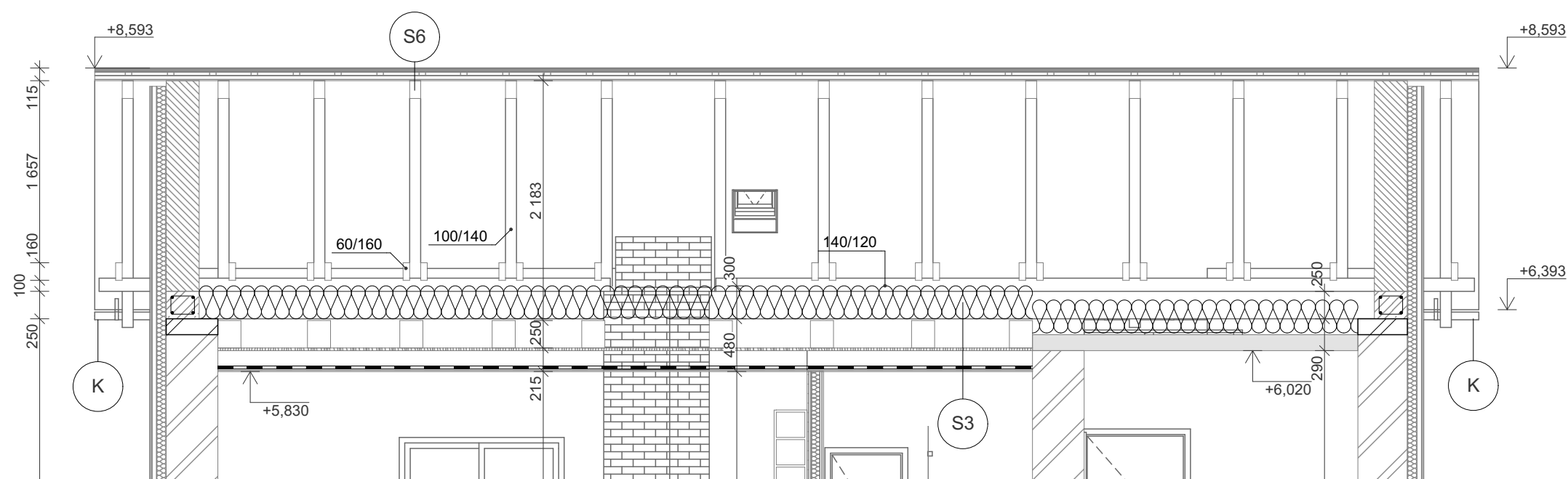
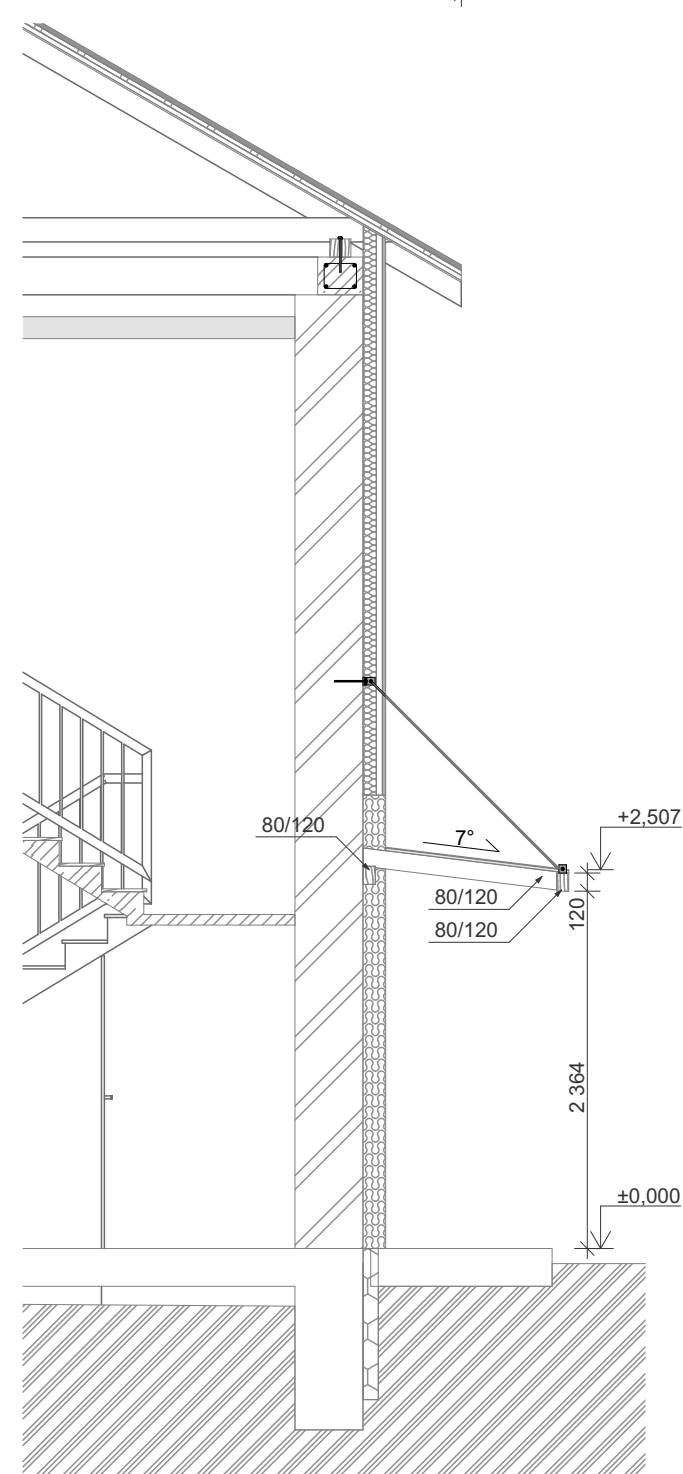


Architectural floor plan of a building with a grid system. The plan shows a rectangular layout with a central corridor and several rooms. Dimensions are provided in meters. Section lines A-A, B-B, C-C, and D-D are indicated. A circular feature labeled 'Z' is shown in the upper right quadrant. The plan includes a detailed view of a corner joint and a section of a wall.



Architectural floor plan of a bathroom (2.03). The plan includes a toilet, a sink, and a shower area. Dimensions are provided for the overall room (3,300 x 1,280) and the shower area (3,300 x 800). The shower area is divided into four sections, each 644 units wide. The overall width of the room is 1,280 units, and the overall length is 3,300 units. The shower area is 800 units wide and 3,300 units long. The toilet is located in the upper left corner, and the sink is located in the upper right corner. The shower area is located in the lower right corner. The plan is labeled '2.03' in the upper left corner.



		adresa: Nádražní 1309/11, 571 01 Moravská Třebová gsm: +420 605 129 188, +420 734 651 212 e-mail: singraf@singraf.cz web: www.singraf.cz	
Projektční a inženýrská činnost ve výstavbě		Vypracoval: Ing. Robert Kelnar, Ing. Tomáš Kolkop Kontroloval: Ing. Tomáš Kolkop, ČKAIT 0701361 IP00	
		Razítko, podpis:	
Projekt:	St. úpravy objektu č.p. 133, Dlouhá Loučka	Datum:	VI/2016
Poloha:	Kraj Pardubický, k.ú. Dlouhá Loučka [626431], Dlouhá Loučka, Parc.č.: st. 267	Stupeň:	DOS
Stavebník:	Obec Dlouhá Loučka č.p. 97, 56943 Dlouhá Loučka	Měřítko:	1:50
Část:	D2 STAVEBNĚ KONSTRUKČNÍ ČÁST	Č. zakázky:	Paré: 13/2013
Výkres:	D2.5 KONSTRUKCE KROVU	Č. výkresu:	D2.5